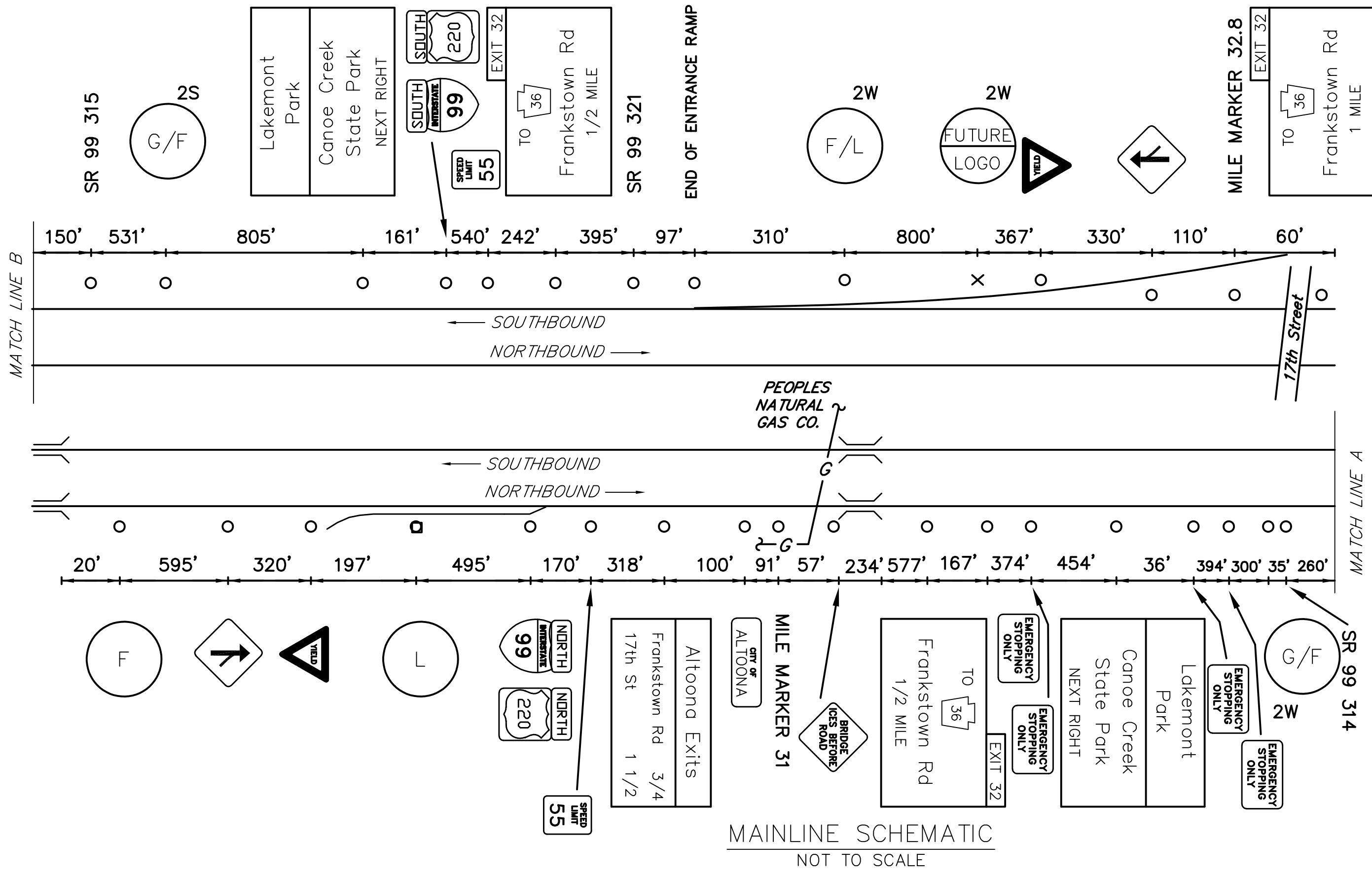


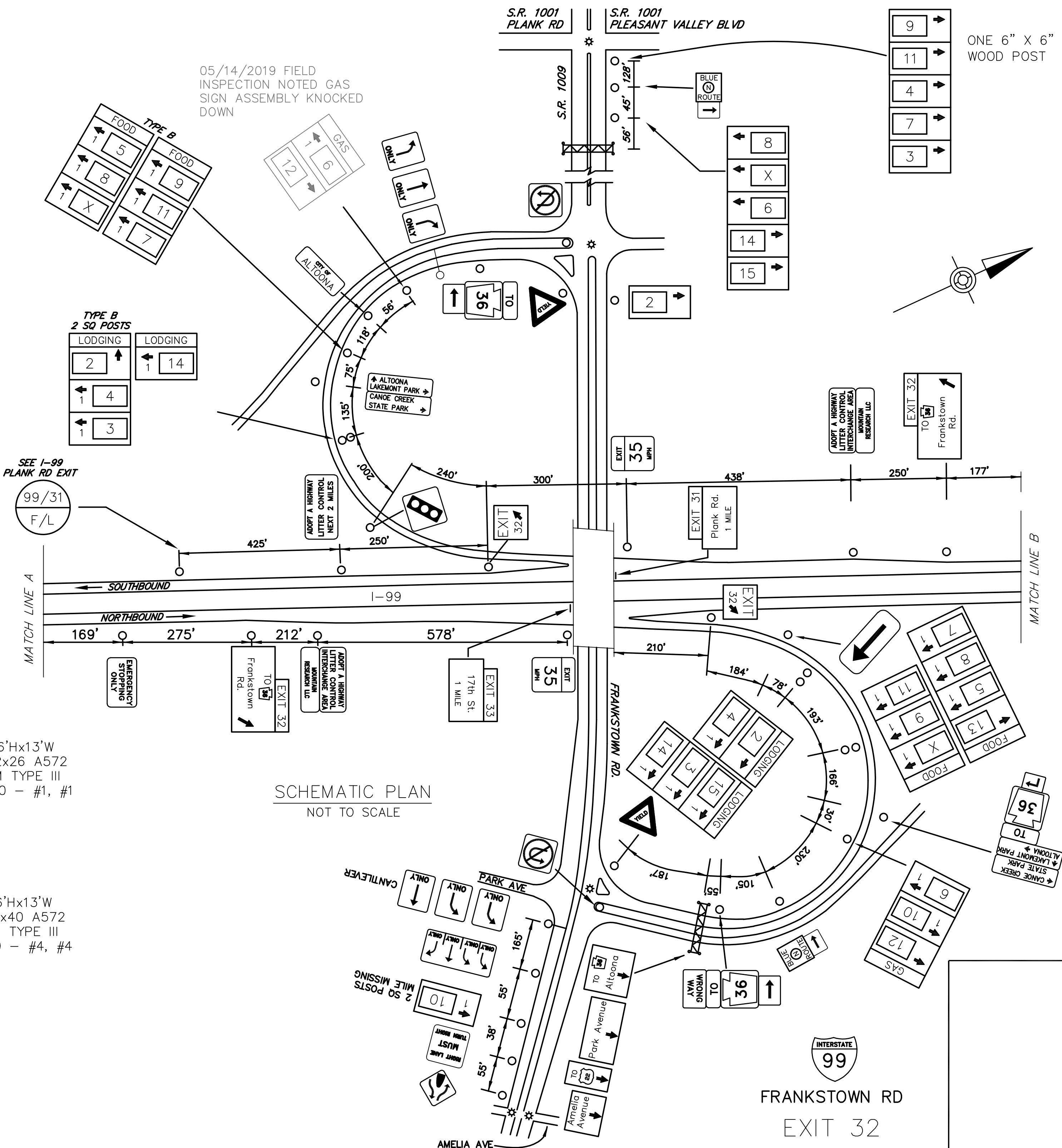
| DISTRICT | COUNTY | ROUTE | PROJECT | SHEET |
|------------------------------------|--------|-------|---------|-------|
| 9-0 | BLAIR | I-99 | | |
| LOGAN TOWNSHIP AND CITY OF ALTOONA | | | | |
| REVISIONS | | | | |
| | | | | |
| | | | | |
| | | | | |



| TABULATION OF QUANTITIES | | |
|--|--------|----------|
| ITEM | UNIT | QUANTITY |
| POST MOUNTED SIGNS, TYPE A, LOGO | SQ.FT. | - |
| POST MOUNTED SIGNS, TYPE B, LOGO | SQ.FT. | - |
| POST MOUNTED SIGNS, TYPE C, LOGO | SQ.FT. | - |
| BREAKAWAY SYSTEMS | EACH | - |
| * STEEL S OR W BEAM POSTS | LBS. | - |
| LOGO SIGN MOUNTING | EACH | - |
| EXTRUDED PANEL REPLACEMENT | SQ.FT. | - |
| REMOVAL OF POST MOUNTED MOTORIST SERVICE SIGNS, TYPES B, C & F | L.S. | - |

* APPROXIMATE QUANTITY FOR INFORMATION ONLY

| SYMBOLS | |
|---------|------------------------------|
| ○ | Existing Sign to Remain |
| △ | Existing Sign to be Removed |
| ◻ | Existing Sign Reset as Shown |
| ● | NEW SIGN |
| × | FUTURE SIGN |
| ∅ | Existing Utility Pole |

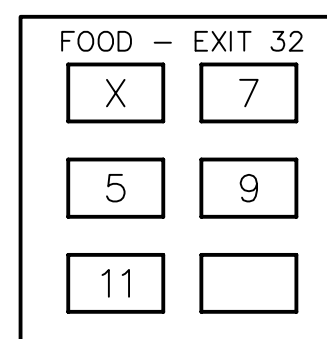
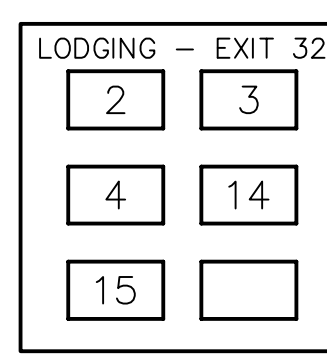
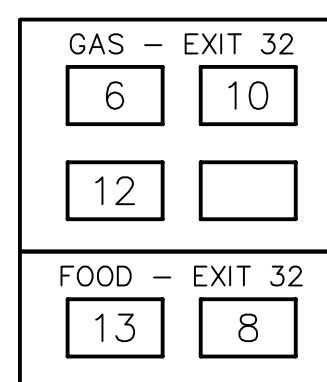


LEGEND

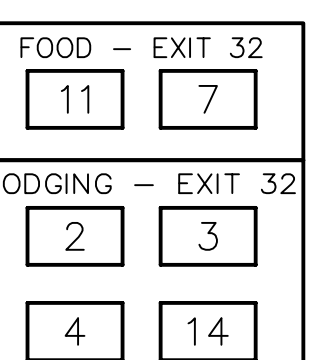
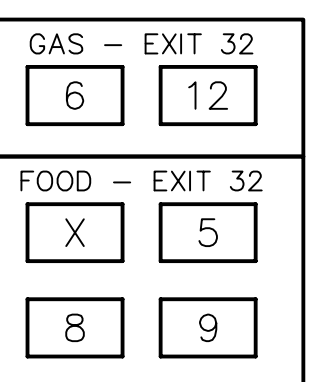
2S/2W - GUIDE RAIL

| EXIT 32 SPECIFIC INFORMATION PANEL | | | |
|------------------------------------|-----------|---------------------------------|----------|
| LEGEND | DIRECTION | BUSINESS | LOGO NO. |
| GAS | NB/SB | SHEETZ (DIESEL) (PLANK RD) | 6 |
| | | SHEETZ (DIESEL) (FRANKSTOWN RD) | 12 |
| | NB | GETGO | 10 |
| FOOD | NB/SB | OLIVE GARDEN | 5 |
| | | WENDY'S | 8 |
| | | PERKINS | 9 |
| | | DUNKI'N DONUTS | 11 |
| | | FIVE GUYS BURGER & FRIES | 7 |
| | | SHEETZ (FRANKSTOWN) | 13 |
| LODGING | NB/SB | SUPER 8 | 2 |
| | | ECONO LODGE | 3 |
| | | QUALITY INN & SUITES | 4 |
| | | FAIRFIELD INN & SUITES | 14 |
| | | TOWNEPLACE SUITES | 15 |
| | NB | | |

NB SIGNS



SB SIGNS



16'Hx13'W
W14x30 A572
3M TYPE III
B650 - #2, #1

14'Hx13'W
W10x26 A572
3M TYPE III
B650 - #2, #1

14'Hx13'W
FUTURE 16'H
W14x30 A572
3M TYPE III
B650 - #2, #2

16'Hx13'W
W12x26 A572
3M TYPE III
B650 - #1, #1

16'Hx13'W
W18x40 A572
3M TYPE III
B650 - #4, #4

D:\DATA\99\SR99\99-01\DRAWINGS\VENN\DISTRICT 09\BLAIR - 07\10-KK-SHFTX-199-EXIT 32 PLAN.dwg 2/2/2024 1:50 PM