

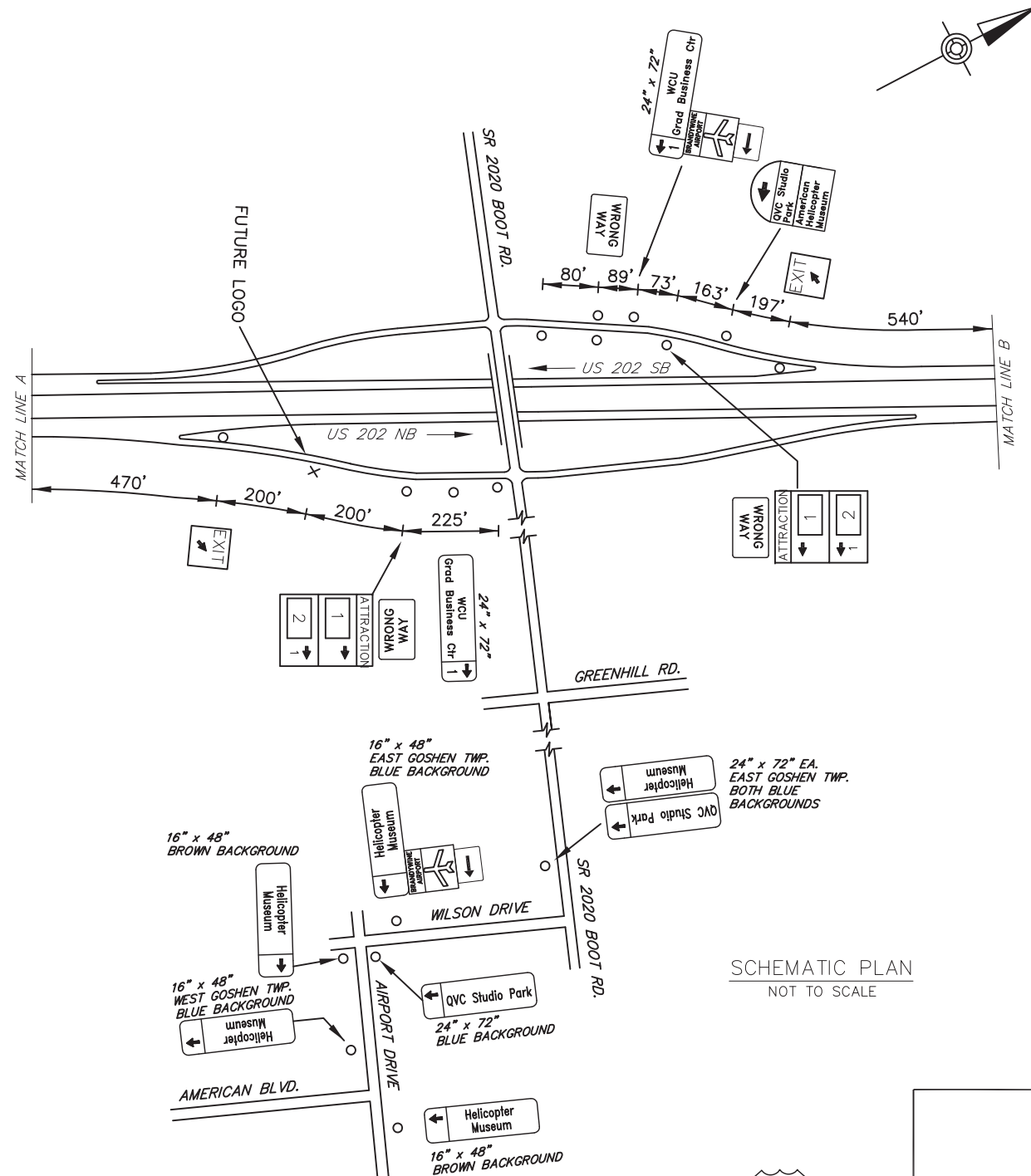
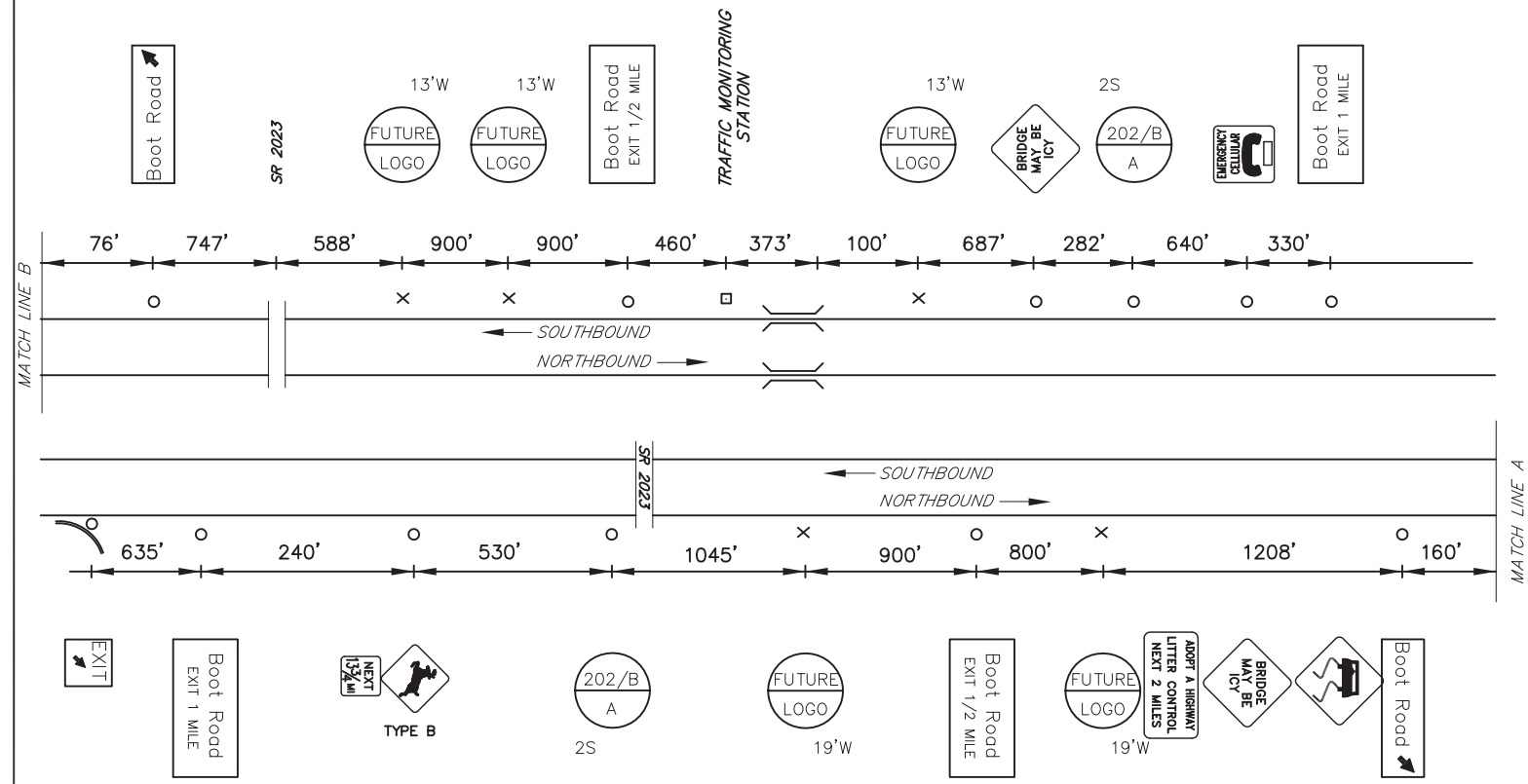
DISTRICT	COUNTY	ROUTE	PROJECT	SHEET
6-0	CHESTER	US-202		
EAST GOSHEN, WEST GOSHEN & WEST WHITELAND TWP's.				
REVISIONS				

ITEM	UNIT	QUANTITY
POST MOUNTED SIGNS, TYPE A, LOGO	SQ.FT.	
POST MOUNTED SIGNS, TYPE B, LOGO	SQ.FT.	
POST MOUNTED SIGNS, TYPE C, LOGO	SQ.FT.	
BREAKAWAY SYSTEMS	EACH	
* STEEL S OR W BEAM POSTS	LBS.	
LOGO SIGN MOUNTING	EACH	
REMOVAL OF POST MOUNTED MOTORIST SERVICE SIGNS, TYPES A & E	EACH	
REMOVAL OF POST MOUNTED MOTORIST SERVICE SIGNS, TYPES B, C & F	L.S.	

\* APPROXIMATE QUANTITY FOR INFORMATION ONLY

**SYMBOLS**

- Existing Sign to Remain
- △ Existing Sign to be Removed
- ◻ Existing Sign Reset as Shown
- NEW SIGN
- × FUTURE SIGN
- ⊘ Existing Utility Pole



SIGN NUMBER	LEGEND	BUSINESS	LOGO. NO.
202/B A NB	ATTRACTION	QVC STUDIO PARK	1
		AMERICAN HELICOPTER MUSEUM	2
202/B A SB			

**NB SIGNS**

6'Hx19'W  
FUTURE 12'H  
W12x26 A572  
3M TYPE III  
B650 - #1, #1

ATTRACTION - NEXT RIGHT

**SB SIGNS**

7.5'Hx13'W  
FUTURE 14'H  
W12x26 A572  
3M TYPE III  
B650 - #1, #1

ATTRACTION NEXT RIGHT

D:\BIDDING\2020\SR 2020 BOOT RD PLAN\DRAWINGS\PERMITS\DISTRICT 06\CHESTER - 1510-XX-SR2020 US202 BOOT RD PLAN August 2, 2018 9:41 AM

  
 S.R. 2020  
 BOOT ROAD